

# NEWHAVEN HERITAGE ROUTES

- West Quay and Beyond -

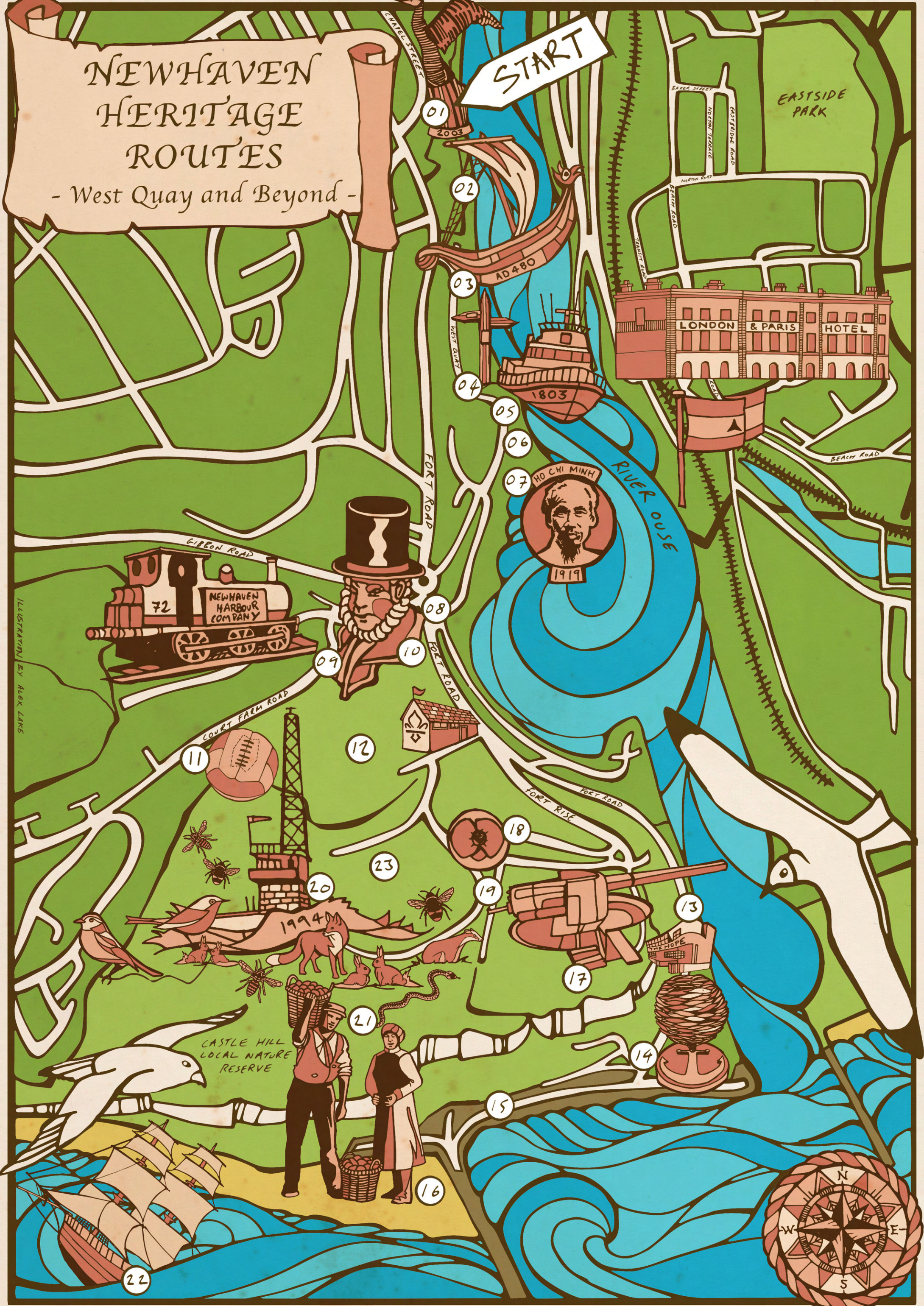


ILLUSTRATION BY ALEX LANE



# NEWHAVEN HERITAGE ROUTES

## - West Quay and Beyond -

Welcome to the first in a series of three Newhaven Heritage Routes for you to explore. This linear route focuses upon the rich heritage of the West Quay Side and goes beyond to West Beach and/or the Nature Reserve at Castle Hill. You can do all or some of the three routes highlighted by this first map and there are several children's activities (CA) included along the way. All the points on the walk are supported by further information researched by local volunteers. See the QR code for the PDF.

### PART ONE

**West Quay Cormorant to Fort Road/Recreation Ground (Stops 01-12 on map). Distance approx. 0.5kms**  
**A level access route with seating along the way.**



- 01 The Cormorant Sculpture (West Quay Car Park - BN9 9BP/TQ447012) was created by local sculptor Christian Funnell and officially unveiled by HRH the Duke of Kent on 15th May 2003.
- (CA) How many fishes are there on the wings of the Cormorant?

- 02 Look towards the river, most of the boats you will see are used for fishing today, but for many years, the River Ouse was an important route for transporting a range of goods.
- (CA) What do you think the initials on the front of the boats stand for? Clue: think about place names.

- 03 Follow the West Quay pathway and look across the river towards a green railway footbridge (near a small white building). This is the site of Newhaven Harbour Station and in front of the station once stood the London and Paris Hotel – a starting point for travelling to France and beyond. Find out more about East Side on our second Heritage Routes Map.

- 04 Walk past the Sussex Food Markets and then stop and look across the river to East Side. In the 1930's, Newhaven Docks were a gateway to Spain used by the British Battalion of the International Brigade to fight fascism in the Spanish Civil War.
- (CA) Information by the wooden Fish Tail Sculpture tells us ice used to be brought in by boats, what do you think it was used for?

- 05 Continue to walk along the West Quay to the RNLI station. Newhaven was one of the very earliest ports to obtain a lifeboat. The first Newhaven lifeboat arrived in May 1803.

- 06 Just past the lifeboat station you will see the slipway for the previous lifeboat station where the lifeboats were launched.
- (CA) What is the name of the current Newhaven Lifeboat?

- 07 At the end of West Quay you will find a stone commemorating Ho Chi Minh. It is believed he worked as a pastry chef on the Newhaven-Dieppe ferry in the early 20th Century. He became the President of the Democratic Republic of Vietnam (1945-69) and was the founder and leader of the Vietnamese Communist Movement.

- 08 Follow the West Quay round to the junction with Fort Road, turn left and continue along the pavement. Cross over the road to Fort Road Recreation Ground. Public toilet facilities are here. (BN9 9BY/TQ44739 00597)

- 09 In 1878, permission was sought to build a tramway in Newhaven linking the proposed western breakwater with Meeching Quarry and the existing mainline railway. Goods including chalk ballast and ice were hauled by steam engine to ships on the River Ouse or onto the mainline. Steam engine Fenchurch No.32636 regularly ran on the tramway between 1898 and 1955. This "Terrier" class engine is now owned by The Bluebell Railway, and still runs on that line.

- 10 The cricket ground was given to Newhaven by the Lord of the Manor, the Earl of Sheffield, in 1890. The opening match on 26th May was between an eleven selected by Lord Sheffield and an eleven representing Newhaven.

- 11 Newhaven Football Club is one of the oldest clubs in Sussex formed at a meeting at The Bridge Hotel in December 1887. It was also one of the founding members of the Sussex County Football League joining in 1920.
- (CA) Why do you think the football team is nicknamed "The Dockers"?

- 12 Walk along Fort Road to the Scout Hut. You can finish here or continue with other parts of the walk.

### PART TWO

**Fort Road to the Beach (Stops 13-16 on the map). Distance approx. 2kms**  
**A level access route shared with traffic.**

- Follow Fort Road south towards the beach. There is no pavement past The Hope Inn, so be aware of traffic. The promenade is shared with cars and ends at the West Beach.

- 13 Continue walking along Fort Road until you reach The Hope Inn. In the 1930s, artists Eric Ravilious and Edward Bawden stayed at The Hope Inn, where they drew and painted the harbour.

- 14 From The Hope Inn, cross over to the grass bank and continue south until you reach the Fisherman's Memorial, created by Christian Funnell to commemorate the tragic loss of lives at sea in the local fishing industry.
- (CA) How many fishes are on the memorial?

- 15 Continue along onto the promenade, look west to view the Breakwater which began construction in 1878/9.
- (CA) How many arches can you count on the breakwater?

- 16 Walk past the breakwater and end the walk on the West Beach. In the 18th century, it was discovered that flint stones (Blue Boulders) found on the beach could be ground down and the powder used to whiten and harden clay.
- (CA) Which stones on the beach do you think could be Blue Boulder Rocks used for cosmetics and pottery?

### PART THREE

**Fort Road/Fort Rise to the Fort and Castle Hill Nature Reserve**

**(Stops 17-23 on the map). This is a more strenuous walk with a steep incline and an accessible, but steep path, as far as the Coast Watch Tower. The road up to the Fort and Watch Tower is shared with vehicles. (BN9 9DS/TQ44967 00223)**

- 17 From the Scout Hut (stop 12), follow Fort Road and then turn right into Fort Rise and up to Newhaven Fort. Built to protect the area from invasion, work started in 1862 and took almost 10 years to complete, by which time the immediate threat of attack had largely disappeared.
- (CA) What countries are represented by the flags at the front of the fort?

- 18 Take the path leading to the Fort Car Park, there is a great view of the town and port at the round memorial bench.
- (CA) How many poppies are there on the bench sculpture?

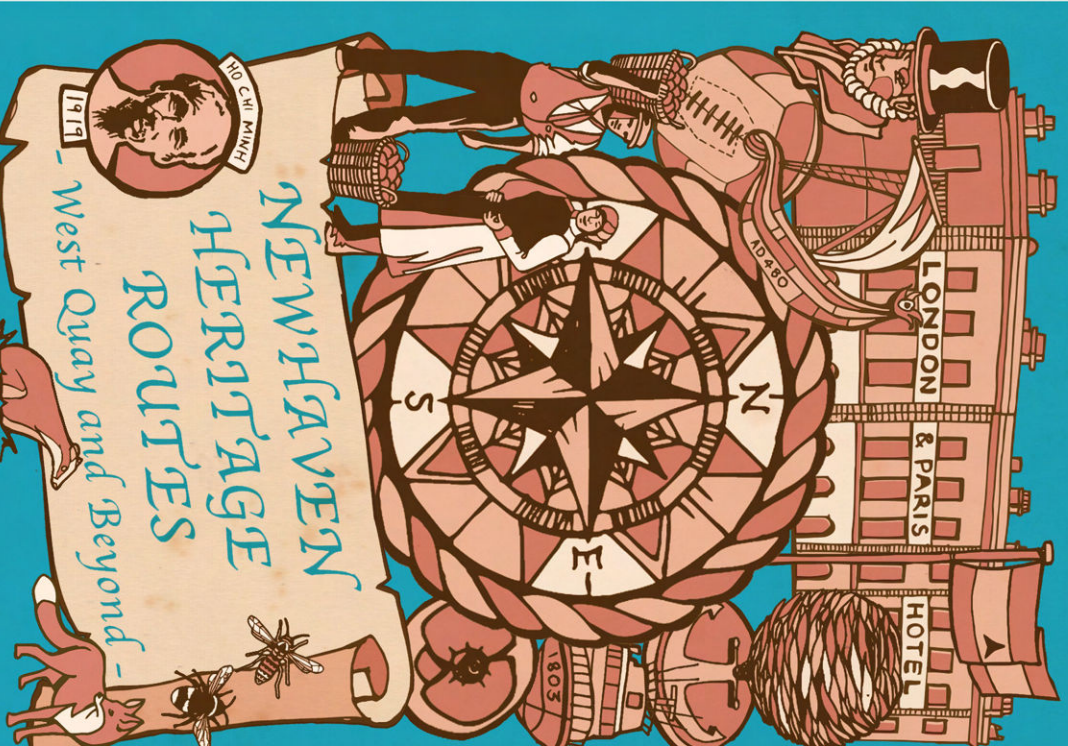
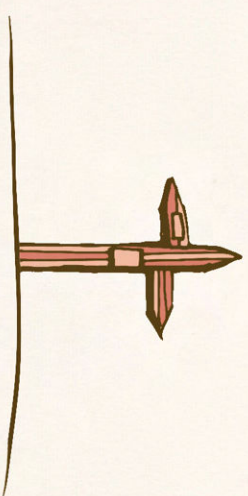
- 19 Head to the path on the south of the Fort Car Park and follow it along until you reach the disused Gun Battery.

- 20 Towards the top of the path, you will see the National Coastwatch Institution Tower (NCI), established in 1994 to support the Coastguard and keep users of the coast safe. (BN9 9DS/TQ446000)

- 21 You can continue up the hill beyond the path onto the grass where you can enjoy the view over the sea (taking care on the uneven terrain). To the east you will see Seaford Bay, in front of you is the Breakwater and Harbour Mouth, and to the East are the cliffs towards Peacehaven.

- 22 In January 1800, HMS Brazen was patrolling the south coast to protect vessels. On the night of 25th January, a storm blew up and the ship was blown onto rocks just west of Newhaven. At 6am the following morning the alarm was raised. Local people hoping to rescue any crew were forced back by the waves. A cage containing two men was lowered down the cliff face to rescue men in the water. Only one man, Jeremiah Hill - a non-swimmer - was saved.

- 23 Castle Hill Nature Reserve is an area of rich chalk grassland with the cliffs to the South and large areas of scrub with substantial grassy glades. Rejoin the path, continue north exploring the reserve, following the various pathways until you return to Fort Road Recreation ground.



route. The route is a linear route that starts at the West Quay and goes beyond to West Beach and/or the Nature Reserve at Castle Hill. You can do all or some of the three routes highlighted by this first map and there are several children's activities (CA) included along the way. All the points on the walk are supported by further information researched by local volunteers. See the QR code for the PDF.

West Quay Cormorant to Fort Road/Recreation Ground (Stops 01-12 on map). Distance approx. 0.5kms  
 A level access route with seating along the way.